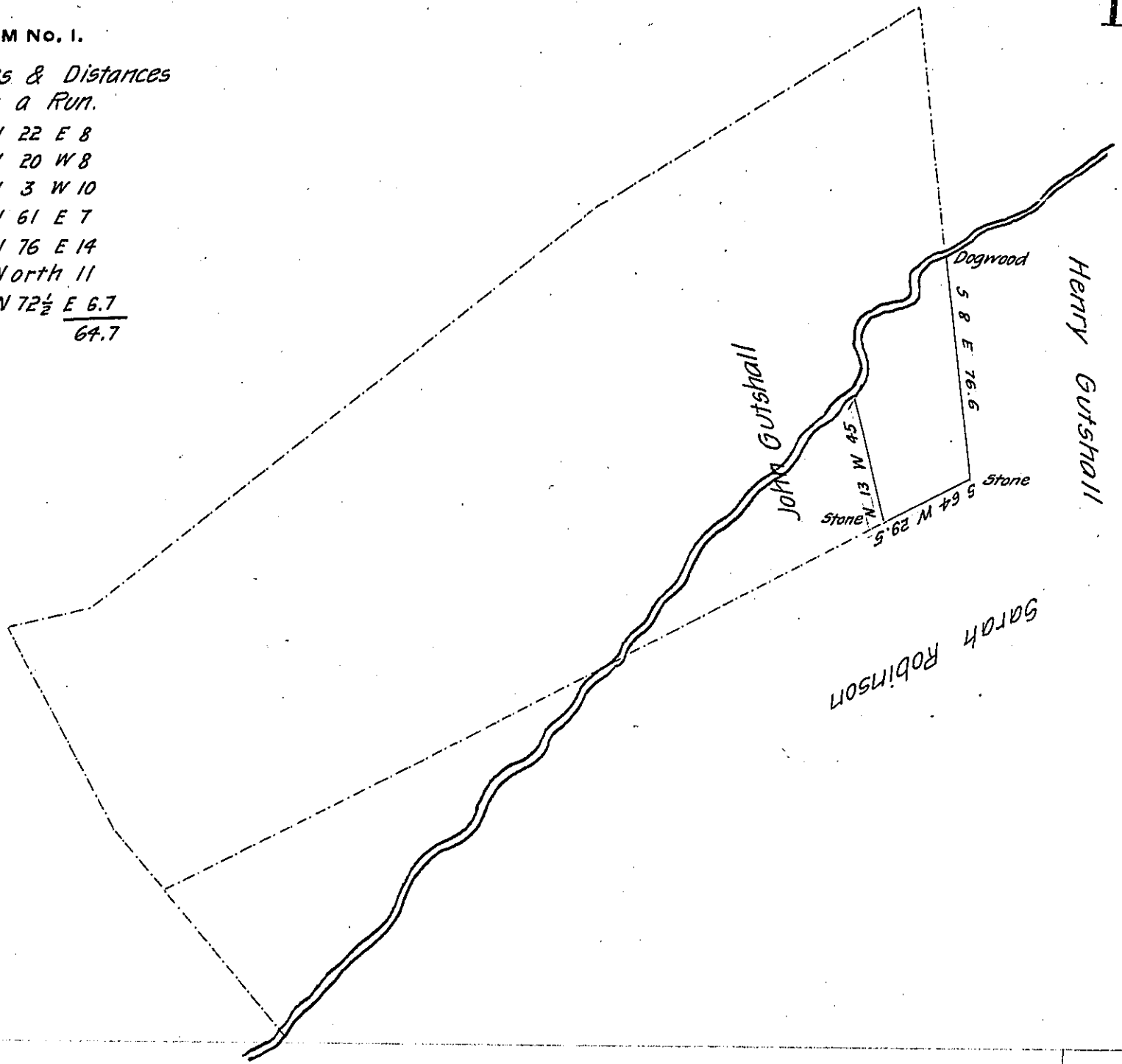


FORM NO. 1.

Courses & Distances
down a Run.

N 22 E 8
 N 20 W 8
 N 3 W 10
 N 61 E 7
 N 76 E 14
 North 11
 N 72½ E 6.7
64.7



Draught of a tract of land Situate in Jackson Township in the
 County of Perry Containing 12 acres 76 perches and allowance of Six per
 cent for roads & Surveyed for Sarah Robinson the 25th day of July 1870
 being part of a larger tract of 274½ acres and allowance Originally surveyed
 in pursuance of a warrant granted to Alexander Rogers dated May 8th
 1789

S. H. Galbraith C. S.

IN TESTIMONY that the above is a copy of the original remaining on file in
 the Department of Internal Affairs of Pennsylvania, made
 conformably to an Act of Assembly approved the 16th day of
 February, 1833, I have hereunto set my Hand and caused
 the Seal of said Department to be affixed at Harrisburg,
 this second day of October 1906

Isaac D. Brown
 Secretary of Internal Affairs